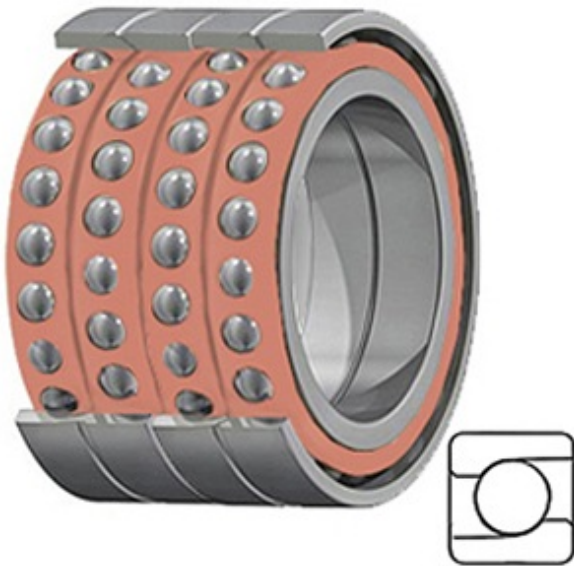




ISOSTATIC BEARING SALES COMPANT



0.984 Inch | 25 Millimeter x 2.441 Inch | 62 Millimeter x 2.362 Inch | 60 Millimeter TIMKEN MM25BS62 QUM Precision Ball Bearings

Bearing No. MM25BS62 QUM

MM25BS62 QUM Bearing 2D drawings and 3D CAD models

Category	Precision Ball Bearings
Inventory	0.0
Manufacturer Name	TIMKEN
Minimum Buy Quantity	N/A
Weight	0.953
EAN	0087796237346
Product Group	B04270
Enclosure	Open
Precision Class	ABEC 7 ISO P4
Material - Ball	Steel
Number of Bearings	4 (1 Quadruplex Set)
Contact Angle	60 Degree
Preload	Medium
Raceway Style	1 Rib Inner Ring and Outer Ring
Cage Material	Phenolic
Rolling Element	Ball Bearing
Mounting Arrangement	Quadruplex-Universal
Flush Ground	Yes
Inch - Metric	Metric
Other Features	Single Row Angular Contact Ball Screw Support Super Precision With Tighter Lateral Eccentricity
Long Description	25MM Bore; 62MM



ISOSTATIC BEARING SALES COMPANT

	Outside Diameter; 60MM Width; Open Enclosure; ABEC 7 ISO P4 Precision; Steel Ball Material; 4 (1 Quadruplex Set) Bearings; 60 Degree Contact Angle; Phenolic Cage Material; 1 Rib Inne
Category	Precision Ball Bearings
UNSPSC	31171531
Harmonized Tariff Code	8482.10.50.28
Noun	Bearing
Keyword String	Angular Contact Ball
Manufacturer URL	http://www.timken.com
Manufacturer Item Number	MM25BS62 QUM
Weight / LBS	2.1
B	2.362 Inch 60 Millimeter
d	0.984 Inch 25 Millimeter
D	2.441 Inch 62 Millimeter