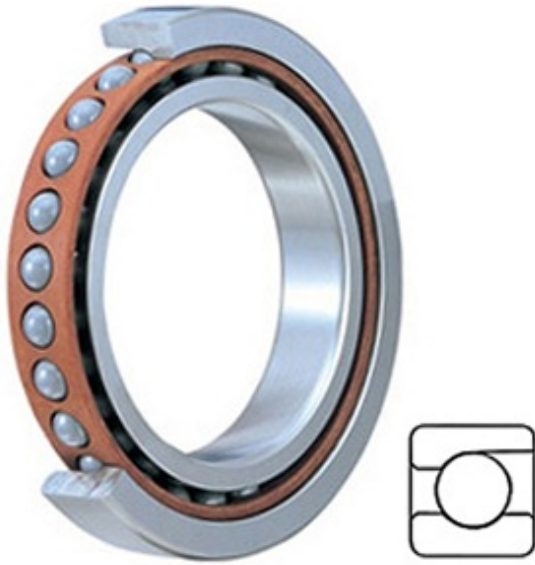




ISOSTATIC BEARING SALES COMPANT



2MM224WI SUL Bearing 2D drawings and 3D CAD models

4.724 Inch | 120 Millimeter x 8.465 Inch | 215 Millimeter x 1.575 Inch | 40 Millimeter TIMKEN 2MM224WI SUL Precision Ball Bearings

Bearing No. 2MM224WI SUL

Category	Precision Ball Bearings
Inventory	0.0
Manufacturer Name	TIMKEN
Minimum Buy Quantity	N/A
Weight	5.357
EAN	0087796323384
Product Group	B04270
Enclosure	Open
Precision Class	ABEC 7 ISO P4
Material - Ball	Steel
Number of Bearings	1 (Single)
Contact Angle	15 Degree
Preload	Light
Raceway Style	1 Rib Outer Ring
Cage Material	Phenolic
Rolling Element	Ball Bearing
Mounting Arrangement	Universal
Flush Ground	Yes
Inch - Metric	Metric
Other Features	Single Row Angular Contact Super High Precision
Long Description	120MM Bore; 215MM Outside Diameter; 40MM Width; Open Enclosure; ABEC 7 ISO P4 Precision;



ISOSTATIC BEARING SALES COMPANT

	Steel Ball Material; 1 (Single) Bearings; 15 Degree Contact Angle; Phenolic Cage Material; 1 Rib Outer Ring R
Category	Precision Ball Bearings
UNSPSC	31171531
Harmonized Tariff Code	8482.10.50.28
Noun	Bearing
Keyword String	Angular Contact Ball
Manufacturer URL	http://www.timken.com
Manufacturer Item Number	2MM224WI SUL
Weight / LBS	11.81
d	4.724 Inch 120 Millimeter
B	1.575 Inch 40 Millimeter
D	8.465 Inch 215 Millimeter