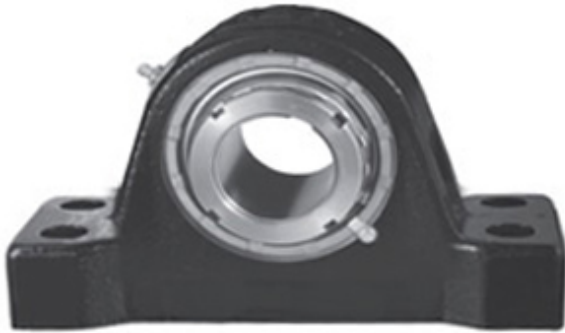




ISOSTATIC BEARING SALES COMPANT

2.938 Inch | 74.625 Millimeter x 4.25 Inch |
107.95 Millimeter x 4 Inch | 101.6 Millimeter
REXNORD MPS9215F Pillow Block Bearings



MPS9215F Bearing 2D drawings and 3D CAD models

Bearing No. MPS9215F

Category	Pillow Block Bearings
Inventory	0.0
Manufacturer Name	REXNORD
Minimum Buy Quantity	N/A
Weight	24.97
EAN	0698210688622
Product Group	M06288
Number of Mounting Holes	4
Mounting Method	Tapered Adapter Sleeve
Housing Style	4 Bolt Pillow Block
Rolling Element	Spherical Roller Bearing
Housing Material	Cast Iron
Expansion / Non-expansion	Expansion
Mounting Bolts	3/4 Inch
Relubricatable	Yes
Insert Part Number	9215U
Seals	Heavy Contact
Housing Configuration	1 Piece Solid
Inch - Metric	Inch
Other Features	Double Row Extra Heavy Duty
Long Description	4 Bolt Pillow Block; 2-15/16" Bore; 4" Base to Center Height; Tapered Adapter Sleeve Mount; Spherical Roller Bearing;



ISOSTATIC BEARING SALES COMPANT

	Relubricatable; Cast Iron; Heavy Contact; Expansion
Category	Pillow Block
UNSPSC	31171511
Harmonized Tariff Code	8483.20.40.80
Noun	Bearing
Keyword String	Pillow Block
Manufacturer URL	http://www.rexnord.com
Manufacturer Item Number	MPS9215F
Manufacturer Internal Number	6868862
Weight / LBS	55
Bolt Spacing Minimum	0 Inch 0Millimeter
Bolt Spacing Maximum	0 Inch 0Millimeter
B	4 Inch 101.6 Millimeter
Nominal Bolt Center to Center	11.5 Inch 292.1 Millimeter
d	2.938 Inch 74.625 Millimeter
D	4.25 Inch 107.95 Millimeter
Actual Bolt Center to Center	11.5 Inch 292.1Millimeter