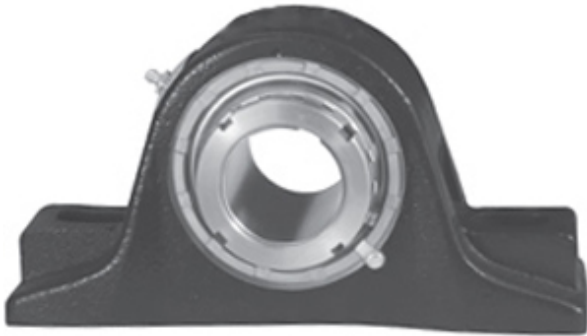




# ISOSTATIC BEARING SALES COMPANT

2.188 Inch | 55.575 Millimeter x 3.344 Inch |  
84.938 Millimeter x 3 Inch | 76.2 Millimeter  
REXNORD ZP9203 Pillow Block Bearings



Bearing No. ZP9203

ZP9203 Bearing 2D drawings and 3D CAD models

Category	Pillow Block Bearings
Inventory	0.0
Manufacturer Name	REXNORD
Minimum Buy Quantity	N/A
Weight	9.125
EAN	0698210168704
Product Group	M06288
Number of Mounting Holes	2
Mounting Method	Tapered Adapter Sleeve
Housing Style	2 Bolt Pillow Block
Rolling Element	Spherical Roller Bearing
Housing Material	Cast Iron
Expansion / Non-expansion	Non-expansion
Mounting Bolts	3/4 Inch
Relubricatable	Yes
Insert Part Number	9203U
Seals	Clearance Seal
Housing Configuration	1 Piece Solid
Inch - Metric	Inch
Other Features	Double Row   Extra Heavy Duty
Long Description	2 Bolt Pillow Block; 2-3/16" Bore; 3" Base to Center Height; Tapered Adapter Sleeve Mount; Spherical Roller Bearing;



## ISOSTATIC BEARING SALES COMPANT

	Relubricatable; Cast Iron; Clearance Seal; Non- expansion
Category	Pillow Block
UNSPSC	31171511
Harmonized Tariff Code	8483.20.40.80
Noun	Bearing
Keyword String	Pillow Block
Manufacturer URL	<a href="http://www.rexnord.com">http://www.rexnord.com</a>
Manufacturer Item Number	ZP9203
Manufacturer Internal Number	6816870
Weight / LBS	20.1
B	3 Inch   76.2 Millimeter
D	3.344 Inch   84.938 Millimeter
d	2.188 Inch   55.575 Millimeter
Bolt Spacing Minimum	0 Inch   0Millimeter
Nominal Bolt Center to Center	8.2 Inch   208.3 Millimeter
Actual Bolt Center to Center	8.3 Inch   210Millimeter
Bolt Spacing Maximum	0 Inch   0Millimeter