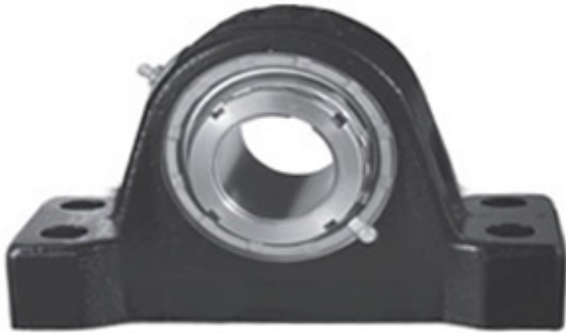




# ISOSTATIC BEARING SALES COMPANT

5.438 Inch | 138.125 Millimeter x 7.188 Inch |  
182.575 Millimeter x 7.063 Inch | 179.4 Millimeter  
REXNORD ZPS9507F Pillow Block Bearings



ZPS9507F Bearing 2D drawings and 3D CAD models

Bearing No. ZPS9507F

Category	Pillow Block Bearings
Inventory	0.0
Manufacturer Name	REXNORD
Minimum Buy Quantity	N/A
Weight	122.126
EAN	0698210714512
Product Group	M06288
Number of Mounting Holes	4
Mounting Method	Tapered Adapter Sleeve
Housing Style	4 Bolt Pillow Block
Rolling Element	Spherical Roller Bearing
Housing Material	Cast Iron
Expansion / Non-expansion	Expansion
Mounting Bolts	1-1/8 Inch
Relubricatable	Yes
Insert Part Number	9507U
Seals	Clearance Seal
Housing Configuration	1 Piece Solid
Inch - Metric	Inch
Other Features	Double Row   Extra Heavy Duty
Long Description	4 Bolt Pillow Block; 5-7/16" Bore; 7-1/16" Base to Center Height; Tapered Adapter Sleeve Mount; Spherical Roller Bearing;



## ISOSTATIC BEARING SALES COMPANT

	Relubricatable; Cast Iron; Clearance Seal; Expansion
Category	Pillow Block
UNSPSC	31171511
Harmonized Tariff Code	8483.20.40.80
Noun	Bearing
Keyword String	Pillow Block
Manufacturer URL	<a href="http://www.rexnord.com">http://www.rexnord.com</a>
Manufacturer Item Number	ZPS9507F
Manufacturer Internal Number	6871451
Weight / LBS	269
Nominal Bolt Center to Center	20.5 Inch   520.7 Millimeter
Bolt Spacing Minimum	0 Inch   0Millimeter
d	5.438 Inch   138.125 Millimeter
B	7.063 Inch   179.4 Millimeter
D	7.188 Inch   182.575 Millimeter
Bolt Spacing Maximum	0 Inch   0Millimeter
Actual Bolt Center to Center	20.5 Inch   520.7Millimeter