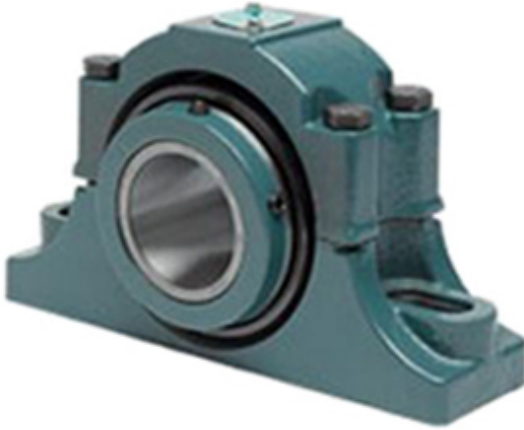




ISOSTATIC BEARING SALES COMPANT



1.375 Inch | 34.925 Millimeter x 3 Inch | 76.2
Millimeter x 1.875 Inch | 47.63 Millimeter DODGE
P2B-EXL-106RE Pillow Block Bearings

Bearing No. P2B-EXL-106RE

P2B-EXL-106RE Bearing 2D drawings and 3D CAD
models

Category	Pillow Block Bearings
Inventory	0.0
Manufacturer Name	ABB MOTORS AND MECHANICAL INC
Minimum Buy Quantity	N/A
Weight	5.448
EAN	0782476587529
Product Group	M06288
Number of Mounting Holes	2
Mounting Method	Concentric Collar
Housing Style	2 Bolt Pillow Block
Rolling Element	Tapered Roller Bearing
Housing Material	Cast Iron
Expansion / Non-expansion	Expansion
Mounting Bolts	1/2 Inch
Relubricatable	Yes
Insert Part Number	S1U-EXL-106R
Seals	Triple Lip Contact
Housing Configuration	2 Piece Split
Inch - Metric	Inch
Other Features	Double Row Double Collar With Set Screw
Long Description	2 Bolt Pillow Block; 1-3/8" Bore; 1-7/8" Base to Center Height; Concentric Collar Mount; Tapered Roller



ISOSTATIC BEARING SALES COMPANT

	Bearing; 5.31" Minimum Bolt Spacing; 5.94" Bolt Spacing Maximum; Relubricata
Category	Pillow Block
UNSPSC	31171511
Harmonized Tariff Code	8483.20.40.80
Noun	Bearing
Keyword String	Pillow Block
Manufacturer URL	http://www.dodge-pt.com
Manufacturer Item Number	P2B-EXL-106RE
Manufacturer Internal Number	077246
Weight / LBS	12
d	1.375 Inch 34.925 Millimeter
Bolt Spacing Maximum	5.94 Inch 150.876Millimeter
Bolt Spacing Minimum	5.31 Inch 134.874Millimeter
D	3 Inch 76.2 Millimeter
B	1.875 Inch 47.63 Millimeter
Nominal Bolt Center to Center	5.6 Inch 142.5 Millimeter
Actual Bolt Center to Center	0 Inch 0Millimeter